

Vacuum Catch-pots & Resin Trap Data Sheet

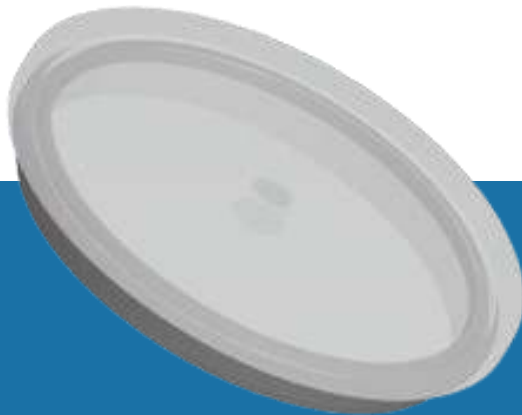


Vacuum Catch-pot Assembly

Part Number: XE-0211

Stainless steel vacuum catch-pot complete with clear acrylic lid, EPDM vacuum seal and GEKA vacuum connector

- Lid features a 20 mm through fitting provided with a GEKA type vacuum connector as standard.
- Other connection configurations available on request.
- Has a mould insert incorporated into the bottom of the 2 litre stainless steel catch-pot as direct connector to vacuum fittings in a mould.

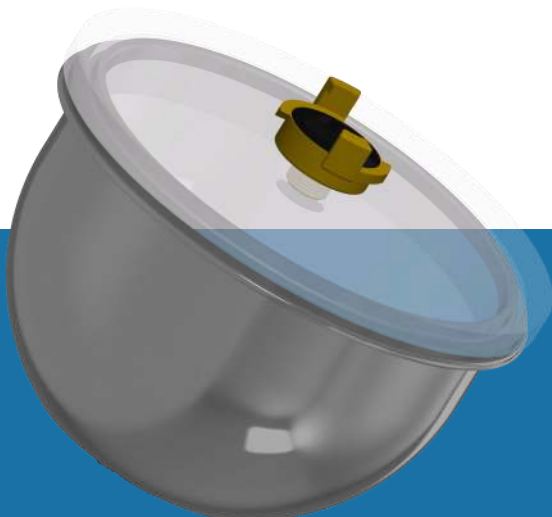


Lid Assembly for Catch-pot or Resin Trap

Part Number: XE-0212

Lid assembly complete with clear acrylic lid, EPDM vacuum seal and GEKA vacuum connector

- Designed as a spare lid for either vacuum catch-pot or resin trap assembly.
- Lid features a 20 mm through fitting provided with a GEKA type vacuum connector as standard.
- Other connection configurations available on request.



Inline Resin Trap Assembly

Part Number: XE-0213

Stainless steel vacuum resin trap complete with acrylic lid, EPDM vacuum seal and GEKA vacuum connector

- Designed to be used inline remotely and can also be used for additional venting from an RTM mould.
- Does not include a mould insert in the catch-pot.
- Lid features a 20 mm through fitting provided with a GEKA type vacuum connector as standard.
- Additional fittings in the lid can be provided to connect inline with a vacuum pump.

Associated Parts — Mould Inserts

20 mm Insert — Composite Mould



Part Number: XA-0014

20 mm machined steel insert designed to be laminated into composite moulds. This versatile insert accepts pipe inserts to connect the following:

- Vacuum catch-pot
- Vacuum vent
- Injection port

20 mm Insert — Metal Mould



Part Number: XA-0017

20 mm machined steel insert designed to be bolted to metal moulds. This versatile insert accepts pipe inserts to connect to the following:

- Vacuum catch-pot
- Vacuum vent
- Injection port

Connection Options

Available Options	Option Number
1 x GEKA vacuum connector	01
2 x GEKA vacuum connector	02
1 x 10 mm through-lid pipe fitting	03
2 x 10 mm through-lid pipe fitting	04
4 x 10 mm through-lid pipe fitting	05
6 x 10 mm through-lid pipe fitting	06
1 x 6 mm through-lid pipe fitting	07
2 x 6 mm through-lid pipe fitting	08
4 x 6 mm through-lid pipe fitting	09
6 x 6 mm through-lid pipe fitting	10
1 x ISO B (male) connector	11
2 x ISO B (male) connector	12

How to order:

To specify a configuration use the part number (on the previous page), followed by the required options numbers, separated by a hyphen: e.g. **XE-0211-03** specifies a vacuum catch-pot assembly with 1 x 10 mm through-lid pipe fitting.

Please contact Composite Integration using any of the contact information featured below.



+44 (0)1752 849 998
Info@composite-integration.co.uk
www.composite-integration.co.uk

DS-0026-B Issued: 11.08.2022