

Mould Inserts Data Sheet

3/8" BSP Insert



Part Number: XA-0002

3/8" BSP machined steel insert designed to be laminated into composite moulds. To be used for a flange vacuum connection.

Can be used in conjunction with XA-0003 to accept 6 mm pipe.

Mould Vent Liner

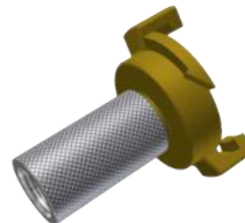


Part Number: XA-0003

Liner used in conjunction with 3/8" BSP insert to reduce the vent diameter.

To be used for vacuum connection, accepting 6 mm pipe.

Vacuum Flange Fitting with GEKA



Part Number: XA-0304

Insert for a flange vacuum connection. To be laminated into composite moulds.

Designed to accept other vacuum GEKA connections. Other connections to suit this insert are available on request.

20 mm Insert



Part Number: XA-0014

20 mm machined steel insert designed to be laminated into composite moulds.

This versatile insert accepts pipe inserts to connect the following:
Vacuum catch-pot
Vacuum vent
Injection port

20 mm Insert—Metal Mould



Part Number: XA-0017

20 mm machined steel insert designed to be bolted to metal moulds.

This versatile insert accepts pipe inserts to connect to the following:
Vacuum catch-pot
Vacuum vent
Injection port

20 mm Insert — Blanking Plug



Part Number: XA-0005

3/8" BSP delrin insert complete with two silicone O-rings. Designed to be used with XA-0014 to close off a vacuum catch-pot or injection port, when not in use.

The product can be drilled to suit to customer requirements.

6 mm Pipe Insert — Nut Type

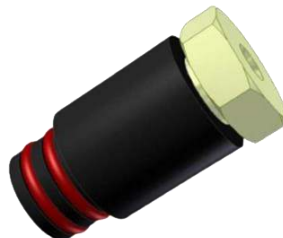


Part Number: XA-0311

3/8" BSP delrin insert with 6 mm through hole fitting and two silicone O-rings.

Designed to be used with XA-0014 or XA-0017 to connect a 6 mm injection or vent pipe to a composite mould.

10 mm Pipe Insert—Nut Type



Part Number: XA-0312

3/8" BSP delrin insert with 10 mm through hole fitting and two silicone O-rings.

Designed to be used with XA-0014 or XA-0017 to connect a 10 mm injection or vent pipe to a composite mould.

Mould Location Cone



Part Number: XA-0020

Machined delrin cone complete with M8 x 50 mm caphead, nut and bolt.

Designed to be bolted to the flange of an 'A' surface mould, between inner and outer mould seals. The cone gives positive X-Y-Z locations between the upper and lower mould surfaces.

Mould Inserts — Injection Valve

Threaded Insert



Part Number: XA-1501

Machined steel threaded insert with a 30 x 2.0 mm O-ring. Designed to be laminated into composite moulds.

This versatile insert accepts threaded pipe inserts to connect the following:
Injection Valve
Injection or vacuum vent ports

Threaded Insert — Metal Mould



Part Number: XA-1519

Machined steel threaded insert designed to be bolted into metal moulds.

This versatile insert accepts threaded pipe inserts to connect the following:
Injection Valve
Injection or vacuum vent ports

Blanking Plug Insert



Part Number: XA-1518

3/8" BSP threaded delrin insert complete with a 17.16 x 1.78 mm silicone O-ring. Designed to be used with XA-1501 to close off a vacuum catch-pot or injection port, when not in use.

The product can be drilled to suit customer requirements.

10 mm Pipe Insert — Nut Type



Part Number: XA-0315

3/8" BSP delrin insert with 10 mm through hole fitting and two silicone O-rings.

Designed to be used with XA-1501 or XA-1519 to connect a 10 mm injection or vent pipe to a metal mould.

10 mm Pipe Insert — Nut Type with Steel Body



Part Number: XA-0315-01

3/8" BSP machined steel insert with 10 mm through hole fitting and two silicone O-rings.

Designed to be used with XA-1501 or XA-1519 to connect a 10 mm injection or vent pipe to a metal mould.

6 mm Pipe Insert — Nut Type with Steel Body



Part Number: XA-0315-03

3/8" BSP machined steel insert with 6 mm through hole fitting and two silicone O-rings.

Designed to be used with XA-1501 or XA-1519 to connect a 6 mm injection or vent pipe to a metal mould.

6 mm Pipe Insert — Nut Type



Part Number: XA-0316

3/8" BSP delrin insert with 6 mm through hole fitting and two silicone O-rings.

Designed to be used with XA-1501 or XA-1519 to connect a 6 mm injection or vent pipe to a metal mould.

Mould Inserts — Air Ejector

20 mm Insert



Part Number: XA-2001

20 mm machined steel threaded insert designed to be laminated into composite moulds.

This insert is used to connect an air ejector to a composite mould.

20 mm Insert—Metal Mould

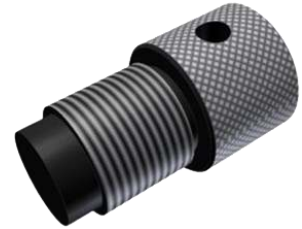


Part Number: XA-2006

20 mm machined steel insert designed to be bolted into metal moulds.

This insert is used to connect an air ejector to a metal mould.

Blanking Plug Insert



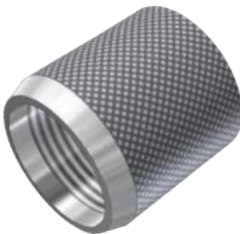
Part Number: XA-2007

20 mm machined delrin insert with no through hole.

Designed to be used with XA-2001 or XA-2006 to close off an air ejector port when not in use.

Mould Inserts — In-Mould Pressure Sensors

Pressure Sensor Insert



Part Number: XA-0030

3/4" BSP machined steel threaded insert designed to be laminated into composite moulds.

This insert is used to connect an in-mould pressure sensor to a composite mould.

Pressure Sensor Insert — Metal Mould

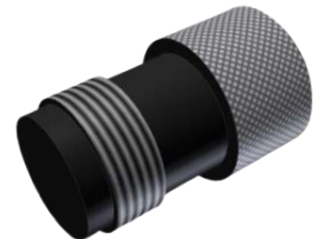


Part Number: XA-0034

3/4" BSP machined steel threaded insert designed to be bolted to metal moulds.

This insert is used to connect an in-mould pressure sensor to a metal mould.

Blanking Plug Insert



Part Number: XA-0033

3/4" BSP machined delrin insert with no through hole.

Designed to be used with XA-0030 or XA-0034 to close off an in-mould pressure sensor port when not in use.

How to Order:

To specify a mould insert, please use the appropriate part number and indicate the quantity. Please contact Composite Integration using any of the contact information featured below.



+44 (0)1752 849 998

Info@composite-integration.co.uk

www.composite-integration.co.uk

DS-0015-E Issued: 11.08.2022